



# Quali Parts

*We supply the missing link!*

**Product Brochure 2023**

# Tips to save energy and downtime



Do regular inspections

Keep the seals clean. Run around it with a damp cloth regularly to make sure there's no dirt build up

Ensure that all doors seal properly, a small air leak can cost you more on energy than a new seal

Floors must be in good condition to prevent moisture creep and or ice build up

Use top class hardware, it will pay for itself in energy savings and downtime prevention

Fit strip curtains in front of door openings, for freezers insist on Super Polar Quality

Use the correct lighting, preferably LED's at least with a IP65 rating





# Fermod Hinge 473

Item Code: FCLH473

Adjustable Composite Hinges for overlapping doors

Symmetrical, invisible and tamperproof fixing screws Interchangeable for left- or right-hand doors Adjustable :  
Vertical ( $\pm 5$  mm) Horizontal ( $\pm 2$  mm)  
Gasket compression ( $\pm 2$  mm)

For doors from 48 to 80 mm thickness, gasket included, for 180° opening

**Option:** 9 mm composite shim to assist for gasket thickness

AFSSA Hygiene Control





# Fermod Hinge 1573-55

Item Code: FCLH1573

Symmetrical, invisible and tamperproof fixing screws Interchangeable for left- or right-hand doors.

Supplied as a pair of hinges

Suitable for doors 80Kg

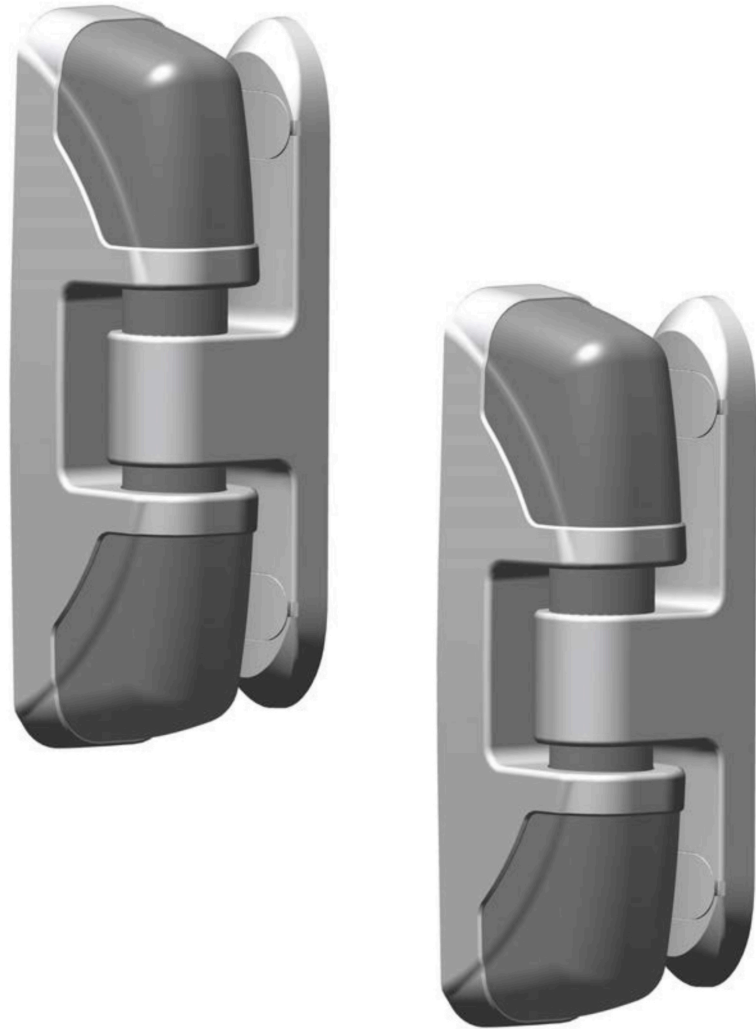
Adjustable:

Vertical ( $\pm 10$  mm) Horizontal ( $\pm 2$  mm)

Gasket compression ( $\pm 2$  mm)

For doors thickness of 62 to 110 mm, gasket included (D), for 180° opening





# Fermod Hinge 1473

Item Code: FCLH1473

Hinge with immediate rising.

Door cannot be lift off, this prevent illegal entrance.

Invisible and tamperproof fixing screws.

Interchangeable for left- or right-hand doors.

Adjustable :

Vertical (0/+10 mm)

Horizontal ( $\pm 5$  mm)

Gasket compression ( $\pm 3,5$  mm)

Spacers 10mm optional extra

For 60mm to 80mm door thickness including gasket, for 180° opening.





# Fermod Swing Door Hinge

Item Code: FSWDH4521

For service doors 30kg  
Composite with S/Steel rods and  
springs.

No stop in both directions  
Supplied as a single hinge





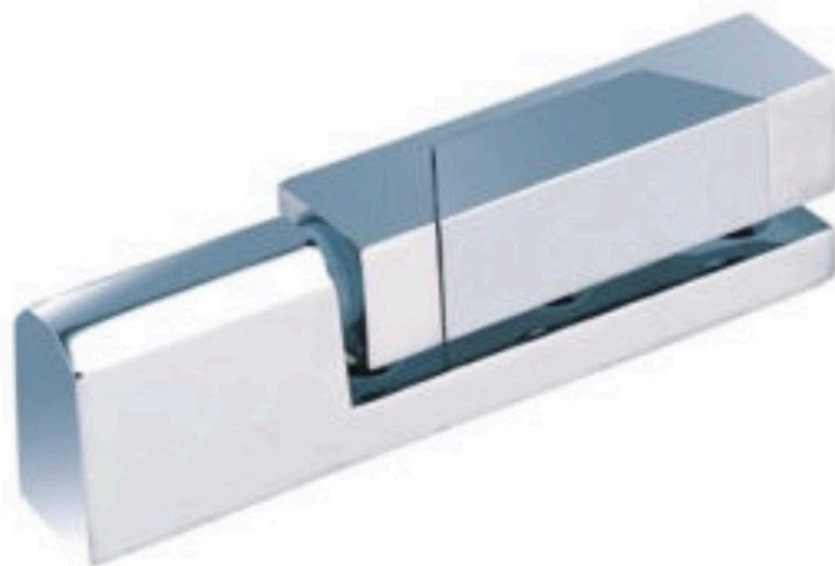
# Cam lift Hinge

Item Code: CH108

Composite cam lift hinge for cold and freezer room hinge doors  
40Kg

Supplied as a pair of hinges with 2 spacers 10mm included  
Height adjustable  
Use with steel washers supplied





# Cam lift Hinge

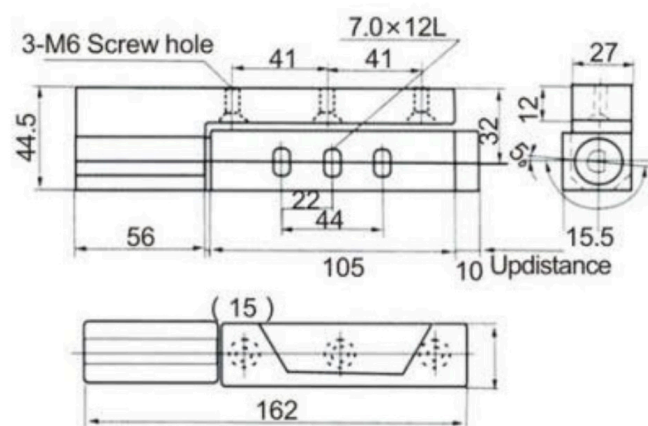
Item Code: CX1132

Cam lift hinge suitable for hinge doors up to 40 kg in cold and freezer door application.

Chrome finished zinc alloy.

Supplied as a single hinge.

Cam lift, use for Left- or Right-hand hinged doors







# Hinge

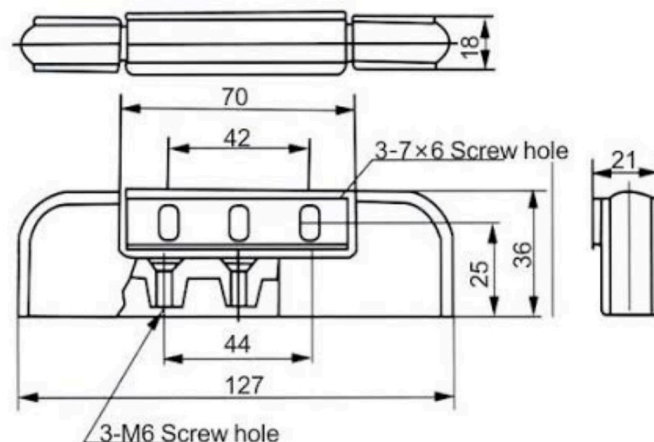
Item Code: CX1336

Economy Door hinge

Die Cast zinc alloy edge mount non-Cam lift hinge

Supplied in a pair.

For doors 40 kg



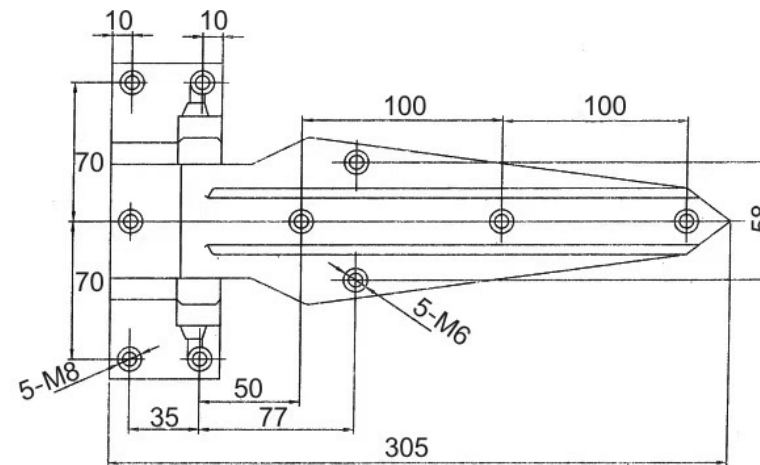


# Chrome Leaf Hinge

Item Code: LH1428

Leaf hinge for smaller doors  
40Kg

Chrome finished zinc alloy.  
Supplied in a pair (2 hinges)





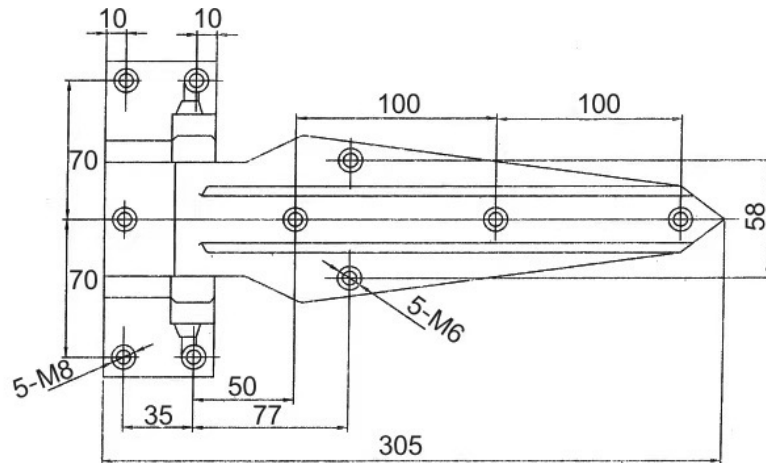
# Hinge Edge Mount Chrome

Item Code: LHCX1470

Reversable edge mount cam-lift  
hinge for cold and freezer room  
doors 100Kg

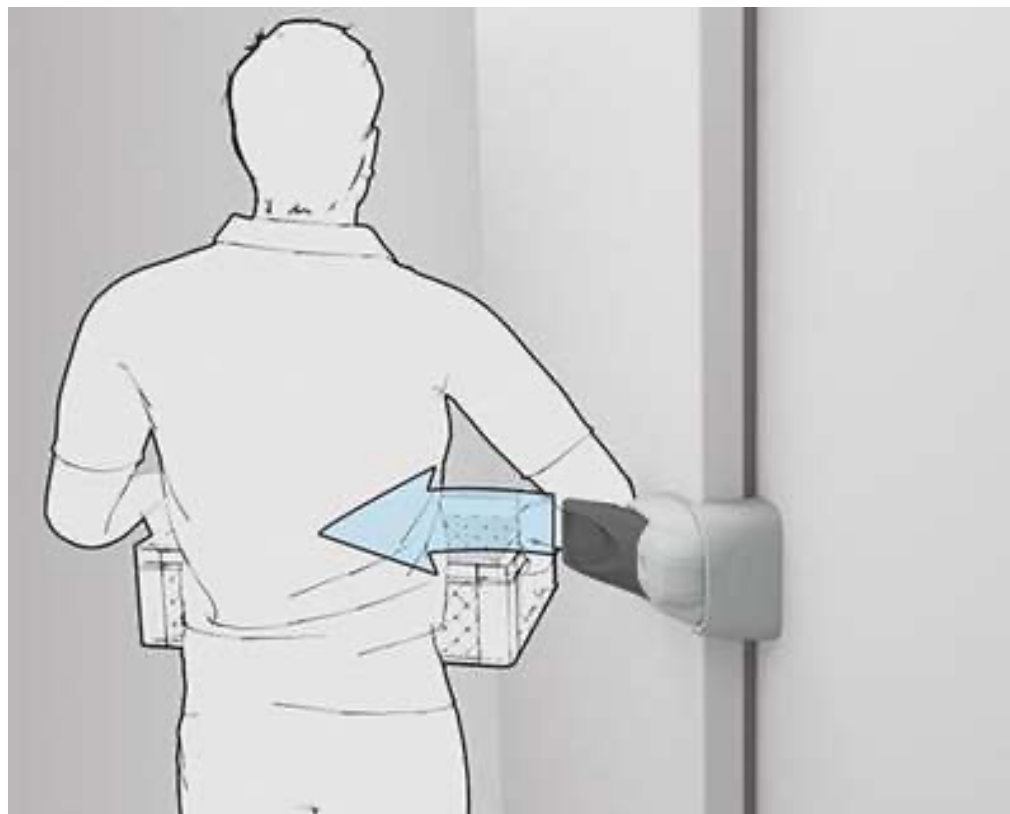
Adjustable height

Supplied in a pair (2 hinges)



# Great innovation !

(Available on request)



**FERMOD LOCK 528**

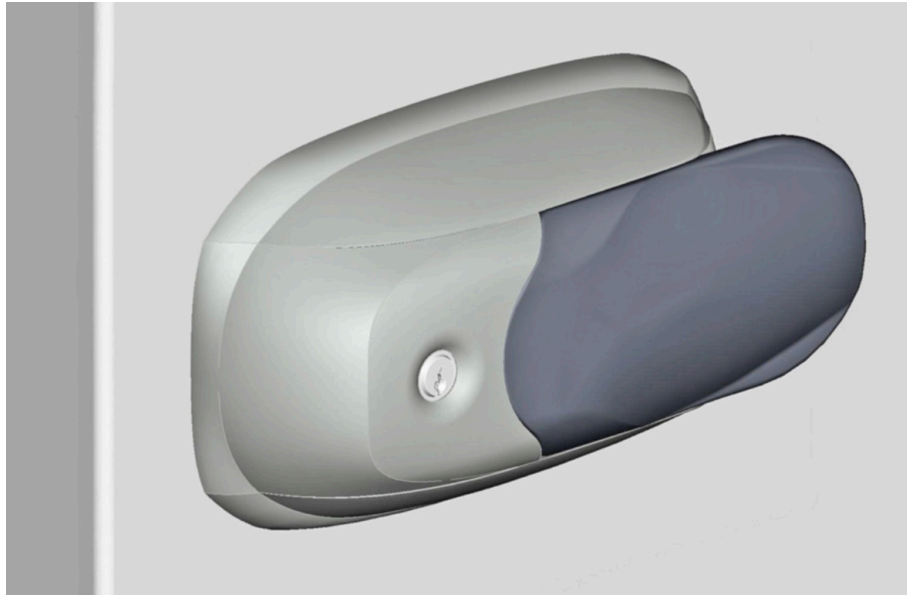
For hinged rebated or overlapping doors.

Allows opening with elbow.

Enable opening whilst carrying produce.

More importantly, limits cross contamination caused by opening with hands and are a more hygienic option.





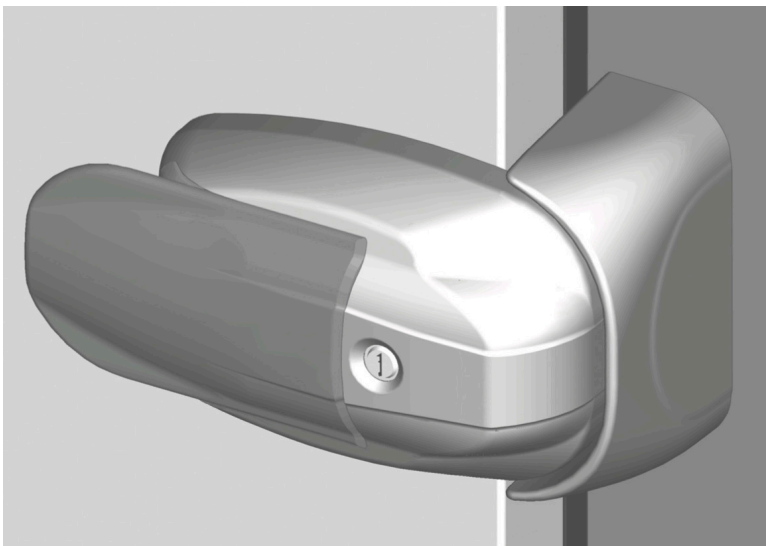
# Fermod 431 Latch & Strike

Item Code: F431LSA

Antimicrobial Latch & Strike for doors  
Made from composite  
Invisible, hygienic and tamperproof  
crossing screws  
Interchangeable for left or right-hand  
doors

Standard parts length for doors of 60,  
66, 115 and 165 mm thickness.





# Fermod 521 Latch & Strike

Item Code: F521LO (Latch Only)

Item Code: F521S4460 (Strike Only)

For hinged rebated or overlapping doors from 27 to 213 mm offset, to be specified for the correct strike

Standard locking version

Adjustable strike on 3 dimensions

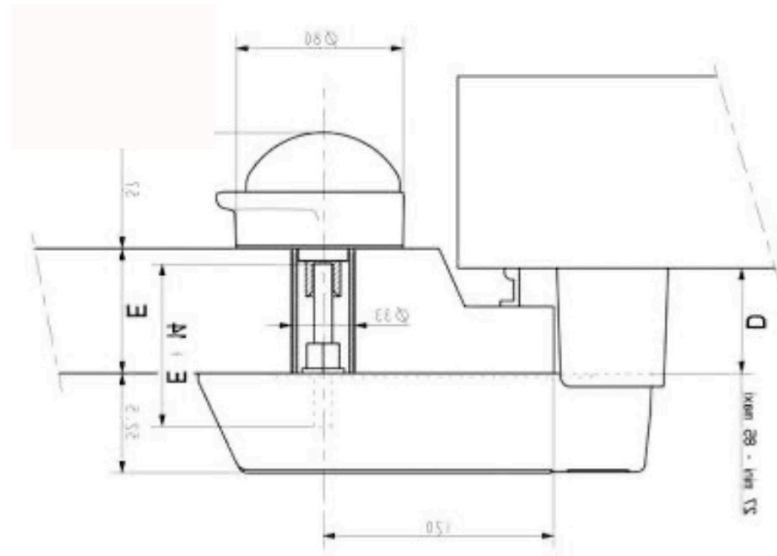
Composite

Invisible and tamperproof screws

Interchangeable for left- or right-hand doors

With internal safety release





# Fermod 921 Latch & Strike

Item Code: F921LO (Latch Only)

Item Code: F921S4257 (Strike Only)

For hinged rebated or overlapping doors  
from 27 to 157 mm; offset to be specified.

Standard locking version with internal  
Internal safety release

Adjustable strike for 3 dimensions

Made of composite

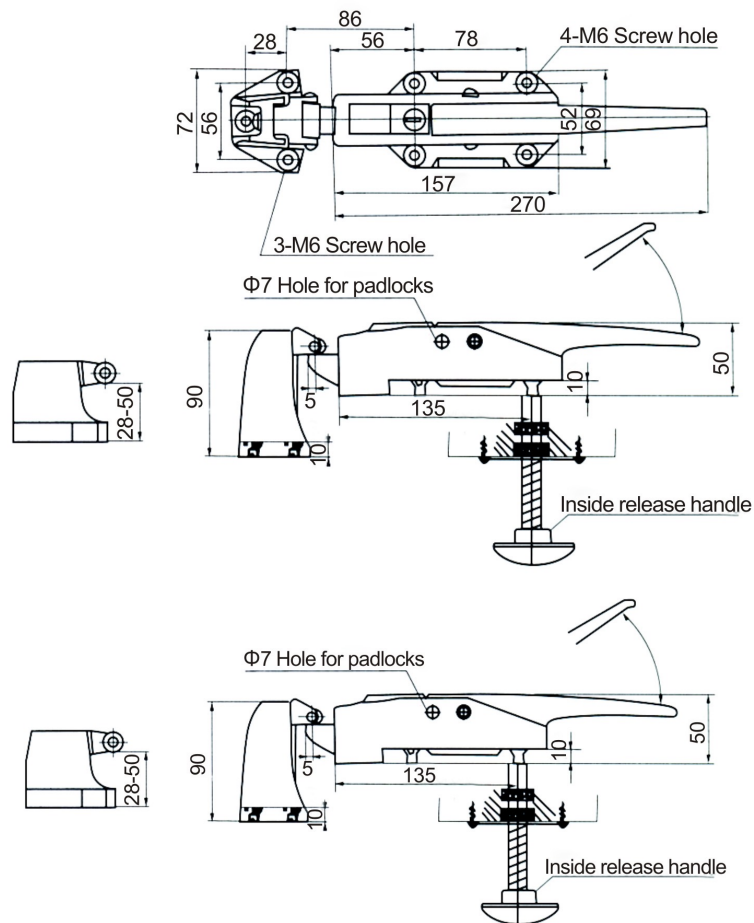
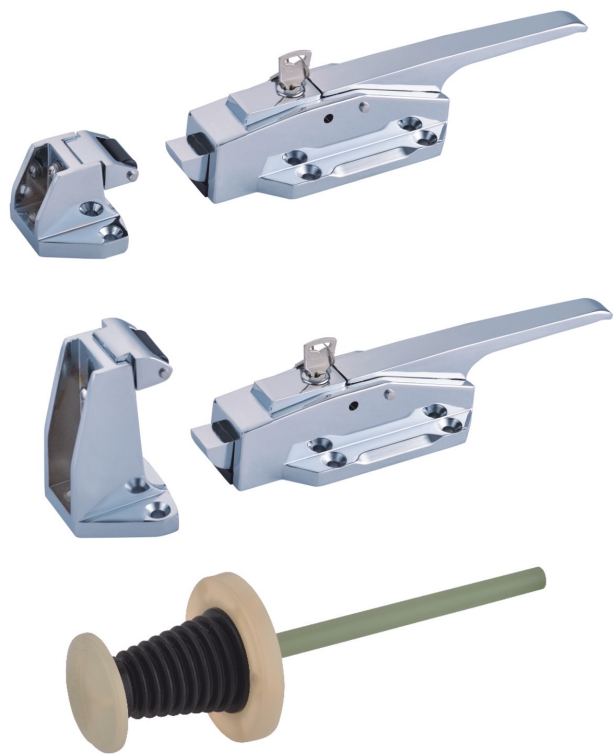
Invisible and tamperproof screws.

Interchangeable for left or right hand doors.

Soft and quiet operation







# Latch & Strike

Item Code: CX1178

Lockable latch and strike

Chrome finish

With internal safety release

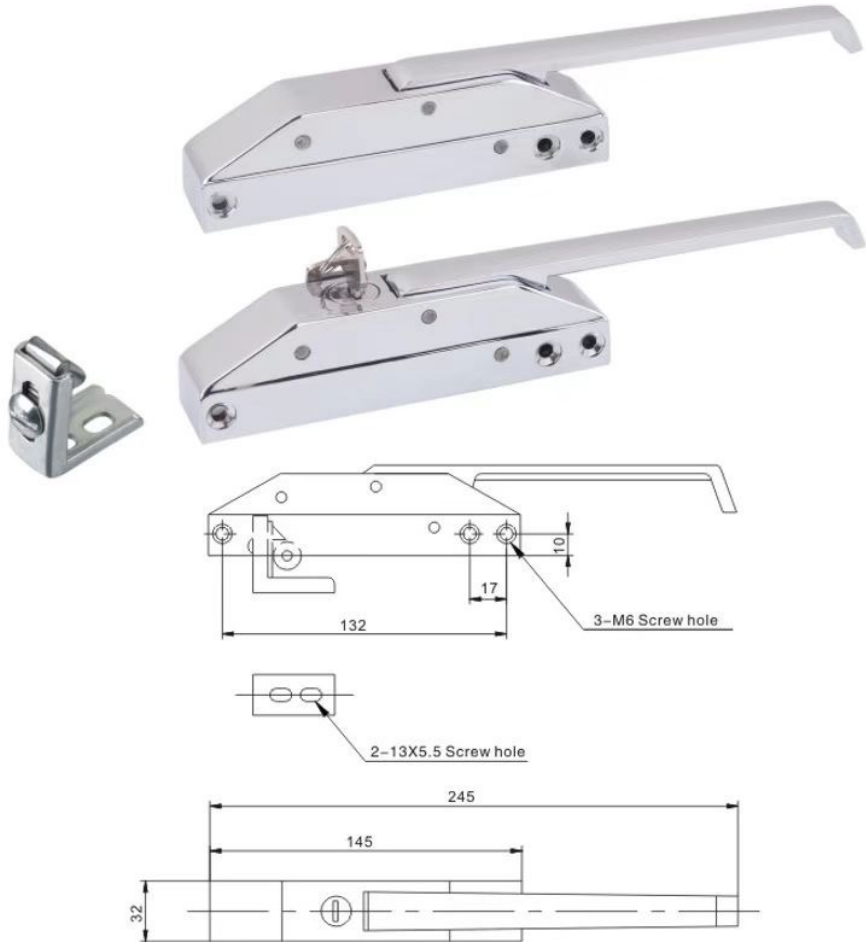
For a door offset of 40-55 mm.





# Latch & Strike

Item Code: CX799



Lockable latch and strike, chrome finish.

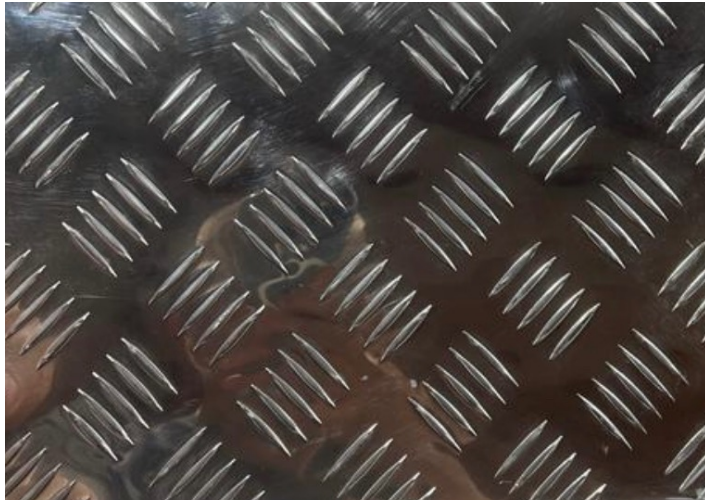
Side mount for smaller doors

Edge mount

Chrome finish

Lockable and non lockable





# Aluminum Retrofit Plate Set

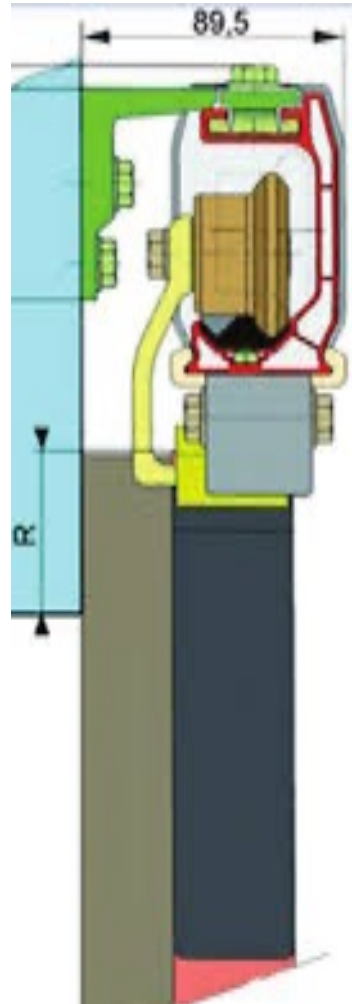
Item Code: ARFPS3020

Two plates of bright aluminum tread plates to assist with the retrofitting of old outdated Latch & Strikes to our high quality FERMOD 431 latch & Strike Plate size 200 x 300mm



The plates close existing fitting holes on doors allowing you to do a quality retrofitting and let the door to work like new and look good.

**We save you time, making your life easy!**



# Fermod Sliding Rail Floor guide system

Item Codes below

**FSRF800** For clear opening 800mm

**FSRF1000** For clear opening 1000 mm

**FSRF1200** For clear opening 1200 mm

**FSRF1500** For clear opening 1500 mm

**FSRF2100** For clear opening 2100 mm

**FSRF2500** For clear opening 2500 mm

Door leaf must be 100 mm wider than clear opening width



Use with Fermod accessories

**FSRA2130** - 80Kg Doors

**FSRA2150** - 120Kg Doors



**Top Rail same as for Fermod floor guide system**



# Fermod Sliding Rail Wall guide system

Item Codes Below

**FSRW800** For clear opening 800 mm

**FSRW1000** For clear opening 1000 mm

**FSRW1200** For clear opening 1200 mm

**FSRW1500** For clear opening 1500 mm

**FSRW2100** For clear opening 2100 mm

**FSRW2500** For clear opening 2500 mm



**Door leaf must be 100 mm wider than clear opening width and fitted on a 16mm sub frame**

Use with Fermod accessories

**FSRA2133 W - 80Kg Doors**

**FSRA2155 W - 120Kg Doors**



Outside 8730



Inside 8530



8730



8530



# Fermod Sliding Door Lever Handle

Item Code: FSDEH8730

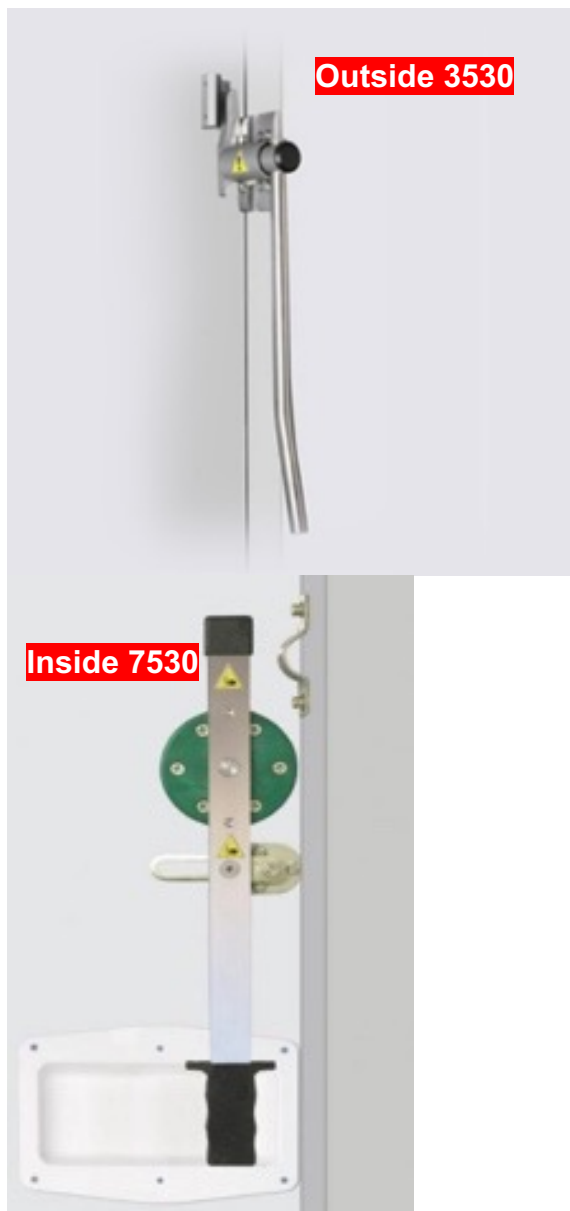
Item Code: FSDIH8530

**Assist with the opening of heavy sliding doors**

Sliding door lever handle set 8730/8530 allow for opening of doors 120 Kg and minimum thickness of 50 mm

Lever action handle 8730 external

Lever action handle 8530 internal



# Fermod Sliding Door Lever Handle

Item Code: FSDEH3530

Item Code: FSDIH7530

## **Assist with the opening of heavy sliding doors**

Sliding door lever handle set 3530/7530 allow for opening of heavy doors 200 Kg and minimum thickness of 80 mm

Lever action handle 3530 external

Lever action handle 7530 internal





# Fermosid Lock 57

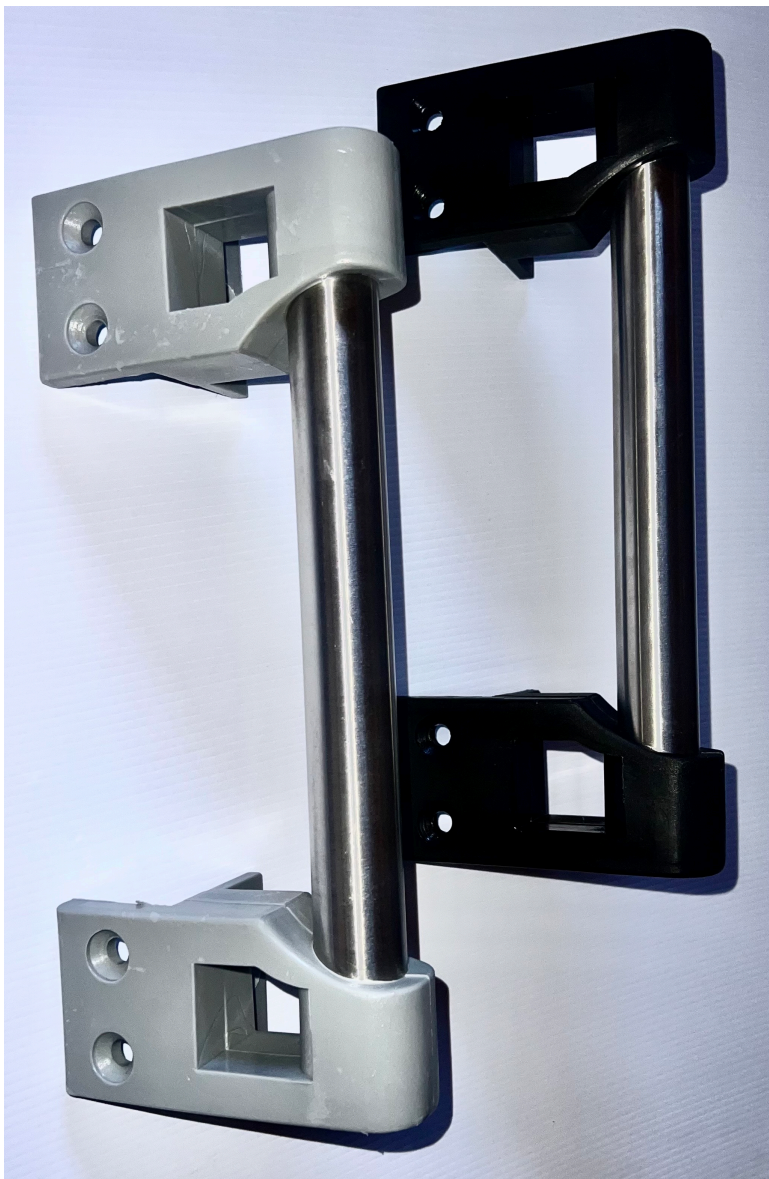
Item Code: FSDL57

Fermosid Sliding Door Lock 57.

Durable sliding door lock with internal safety release.







# Sliding Door Pull Handle

Item Code: SDPHB250 (Black)

Item Code: SDPHG250 (Grey)

Sliding Door Outside Pull Handle

Composite with 304 stainless steel  
bar

6 Fastening points

Available in Black and grey





# Sliding Door Internal Pull Handle

Item Code: SDIPH



Recessed ABS handle

Suitable for smaller sliding doors

Easy visible yellow pull bar

Screws and hole caps supplied





# Automated Sliding Rails

Item Code: ASFRDT50

Automated Glass Door Fronts

For Beer Caves

Rail with motor and smart controller

Two smart sensors included

Surge arrestor standard

12 months guarantee

Item Code: GDAB1522

Glass Door Bi parting for clear opening

1500x2200(H)

Side glass panels on request



Standard bi parting glass doors in stock for;  
clear opening 1500 x 2200

Full glass door fronts and installation available  
on request



# Information Page



## Pressure relieve valves



Pressure Relief Valves or PRV's are an integral component of any cold store unit. Cold room walls are subjected to the strains caused by variations in pressure, either from inside or outside. This can have an effect on the structure of the room and also make it difficult to open the door.

So what does a PRV do?

Ensures pressure equalization

Help the unit maintain a constant desired air temperature

PRV's can be either wall or ceiling mounted. They should always be installed by a competent person.





# Fermod PRV 2227

Item Code: FPRV2227

Expandable valve for 75 to 150 mm wall thickness, up to 215 mm with the aluminum extension tube

For 120 mm maximum ceiling thickness

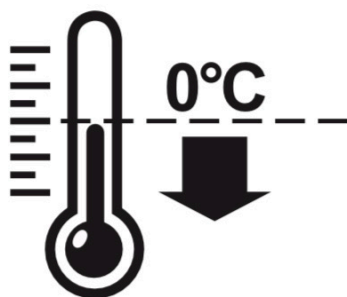
3 possible options for the cable outlet: external vertical, external horizontal or through the panel Wall or ceiling mounting

Airtight mobile flaps to limit ice formation in cold room

Watertight mounting to avoid ice formation between the valve and the wall

8W heating element is completely enclosed in the valve

Made of chemically resistant and corrosion proof composite material





# Fermod Pressure relieve valve 2230

Item Code: FPRV2230

It is a heated, mechanically operated valve, with two airtight mobile flaps, one for admission the other for exhaust. Internal heating element and control contact for safe functioning, for negative temperature cold room down to -30°C.



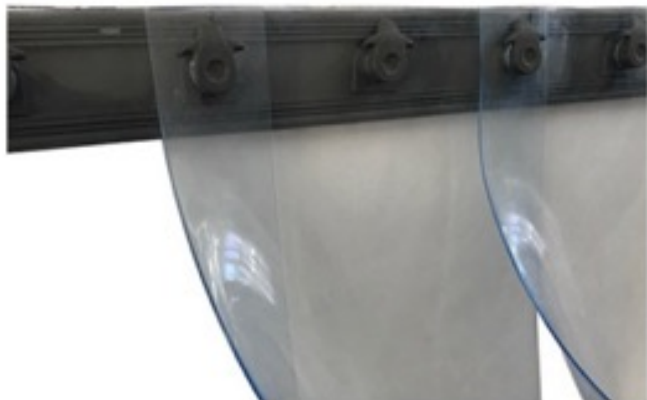


# Fermod Pressure relieve valve 2260

Item Code: FPRV2260

It is heated, mechanically operated, High-flow heated valve for wall mounting, for negative temperature freezer rooms down to -40°C.





# Strip Curtain Clear Super Polar

Effective Temperature Control - ETC™

Item Code: SCSPC200R

Item Code: SCSPC300R

Item Code: SCAIYP200R

Item Code: SCHR200LD



High quality Super Polar strip curtains with composite rail system. This rail allows quick easy installation. Curtain are suitable for -30 degree C and HACCP compliant.

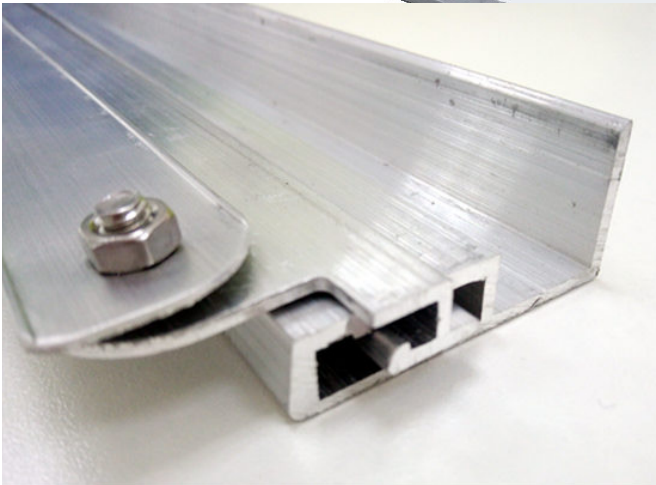
Standard Clear opening widths (Height on your request) 900, 1000, 1200, 1350, 1500, 1600, 1800 and more Pre packed Ready to go 900 wide x 2100 High (Clear Opening)

**Also available in rolls for DIY on request.**

**200mm wide, 300mm wide and 200mm yellow insect replant curtains in stock**







# Magnetic Edge Sealing Strip Curtain ETC™



Item Code: MESC300

Clear curtain 300mm that snap together  
with magnets

Complete system with hanging rail

No need for overlapping of curtains

Better wind resistance

Improved insulation

**New innovative product – First in SA.**





# Information Page



## The importance of the right choice for lighting in your cold and freezer room

- Fluorescent light lumen output is highly affected by low temperatures
- LED lights is not affected by low temperatures – in fact it is good for the LED
- It is important to use at least an IP 65 LED light, moisture will definitely damage the LED light
- Reduction of energy cost as much as 75%
- Diminished load on cooling equipment, further reducing energy consumption because cooling systems do not have to work as hard
- Long life spans (ten years or more) of LED lights equate to a drastic reduction in the need for lighting maintenance and replacement.



**We can assist with light design for optimum LUX**



# Cold-room economy LED

Item Code: LEDBH20W



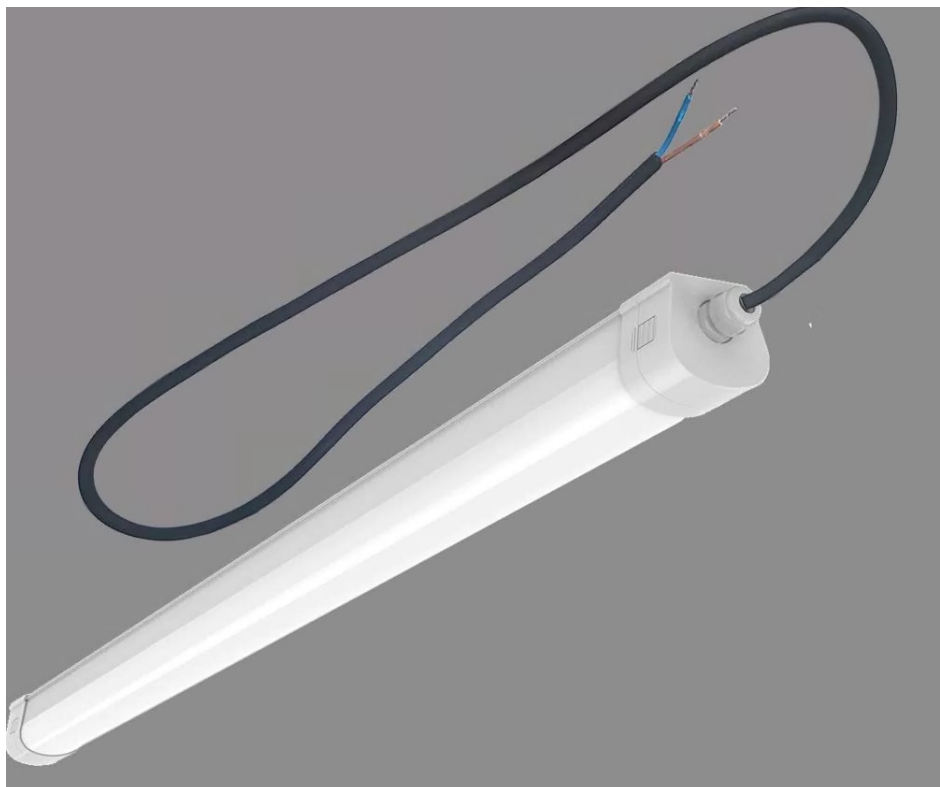
LED light in a high quality IP65 housing is the perfect light solution for smaller Cold and Freezer rooms

Working temperature +10 to -25 deg C

AC Input 220-240 Volt 22 Watt

2 Year Guarantee





# Cold And Freezer room Light

Item Code: LED22W1140

Waterproof IP69K, redefines waterproof standards for cold and freezer room lights

All-plastic design to prevent condensation inside the housing

The sealed lamp end caps use advanced technology to avoid thermal expansion and contraction

Length: 1140mm

Electrical: 220-240 v 50Hz 22Watt

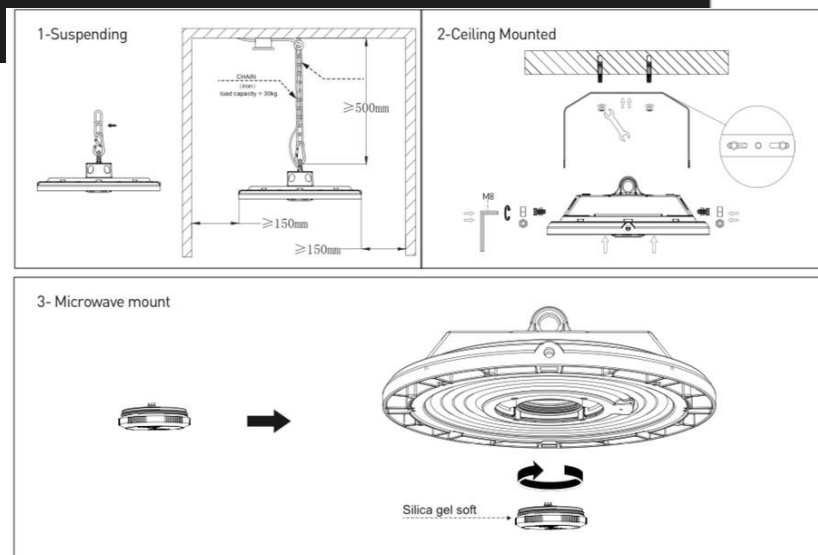
Lumens: 3500 (160L/W)

Light color: 6500K

Working temperature: -20 to 25 deg c

5 years guarantee





# High Bay LED Lights

Item Code: LHB150W

Item Code: LHB100W

H36A series is a new design concept of LED high bay lights, with patent designed and perfect light distribution for use in large Cold/Freezer storage and warehouses

Lightweight design for easy installation 3 – 15 meters

Excellent heat dissipation for longer lifespan

Self-cleaning and dustproof design

Water resistance to IP65 Standards

Working condition from -30 to +50 deg C

AC input 100-277 V 50-60Hz

Light source 2835 6500 Kelvin

Microwave dimming available as an optional extra

5 Year Guarantee





# LED Tube Light

Item code: LEDT24W

High protection levels against water, and humidity

Mounting with terry clips – not included

Exceptionally low cost of ownership

Quick paybacks

Ideal for glass door retrofits

Length: 1500 mm

Electrical: 160-240 v 50Hz 24 Watt

Lumens: 3100 (130L/W)

Light color: 6500K

Working temperature: -20 to 35 deg c

2 years guarantee



# Specialized Vertical Door Lighting

Item Code: NEW PRODUCT



Cost-effective and safe use, with low voltage  
Suitable for low temperature refrigerated cabinets -25 to +25° (IP 65);

Installation: screw and clip

Brilliant light distribution with CRI 90

Excellent product illumination with innovative optics

Heat sink profile made of anodised, extruded aluminium

Length: 750/950/1350/1500/1700(mm)

Electrical: 24V DC

Lumens: 3500 (160L/W)

Light color: 6500K and Fresh Meat

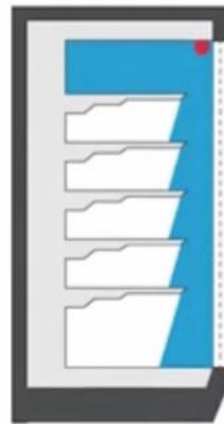
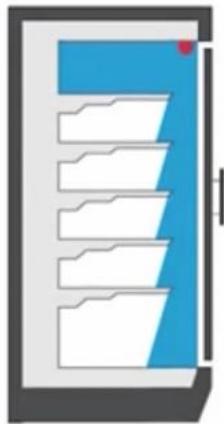
Working temperature: -20 to 25 deg c

5 years guarantee





Light Performance



# LED for Cabinet Canopy

Item Code: NEW PRODUCT

## Canopy Light Top Light - LC Series

Cost-effective and Safe-use operation low voltage  
 Suitable for low temperature refrigerated cabinets  
 Flexible integration with multiple accessories  
 Brilliant light with CRI 90  
 Excellent product illumination with innovative optics  
 Heat sink profile made of anodised, extruded aluminium

Length: 720/900/1200/1350/1500(mm)

Electrical: 24V DC

Lumens: 147L/W

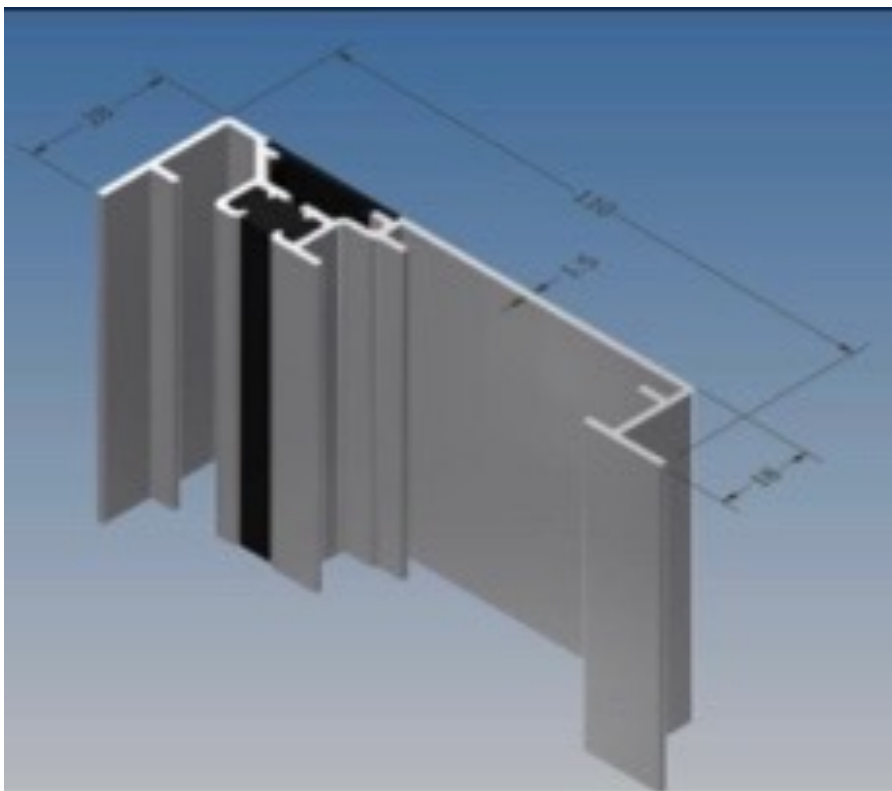
Light color: 6500K and Fresh Meat

Working temperature: -30 to 30 deg c

5 years guarantee







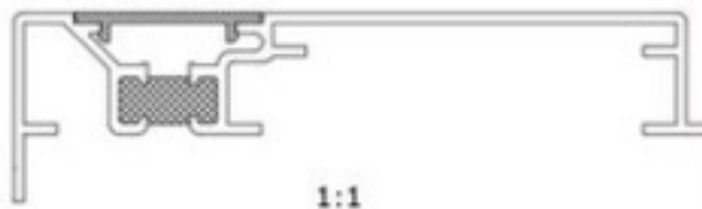
# Aluminum door opening

Item Code: AAT55NA

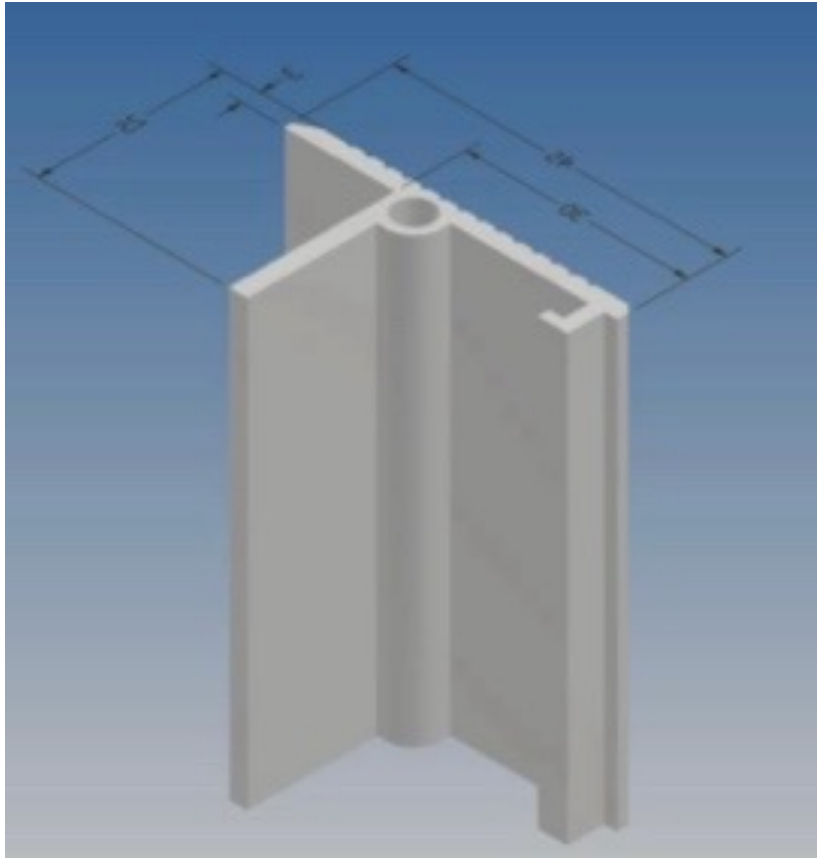
Aluminum profile, natural anodized with thermal break and heater port.

This profile is the perfect solution for door openings.

Heater is easily accessible by removing the high impact PVC cover.





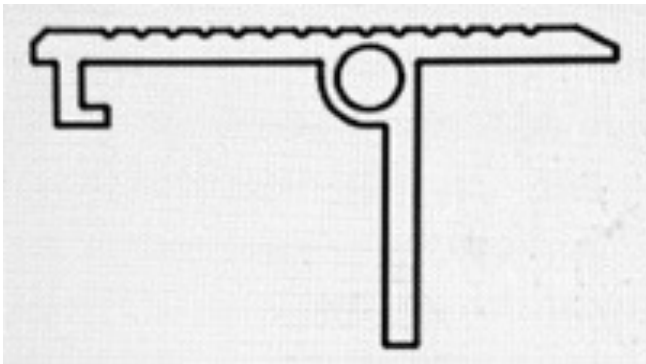


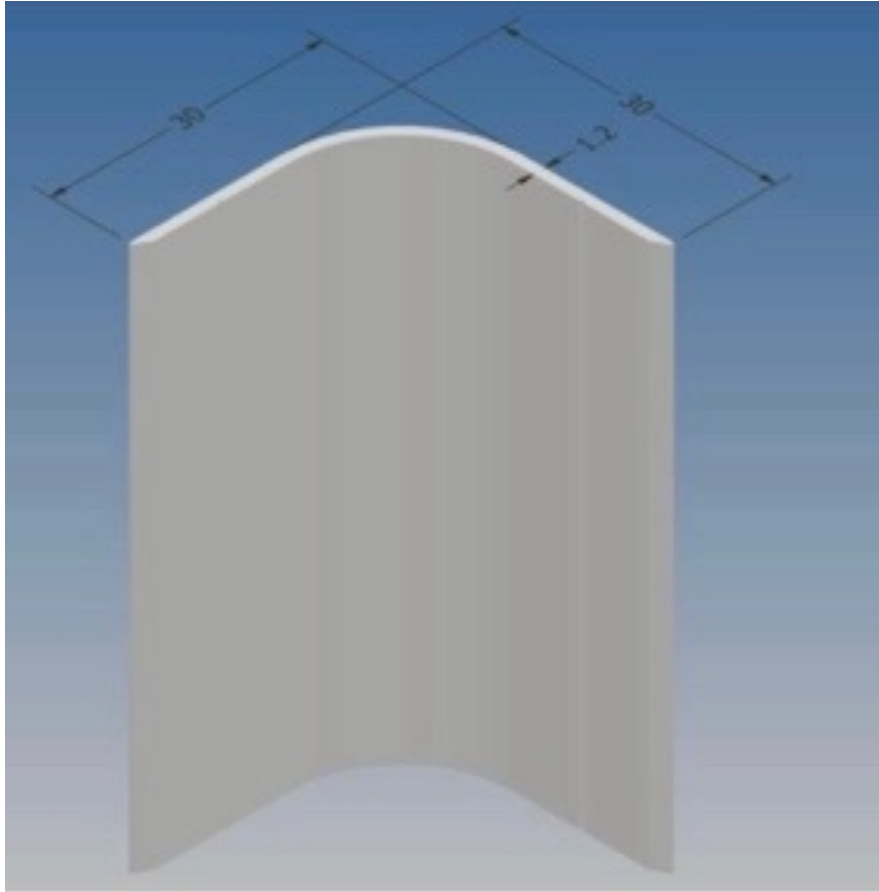
# Aluminum Threshold

Item Code: ATH4JL1931

Heavy duty natural anodized aluminum profile for door openings with a heater port.

For use in raised or non raised floors.





# Aluminum Coving

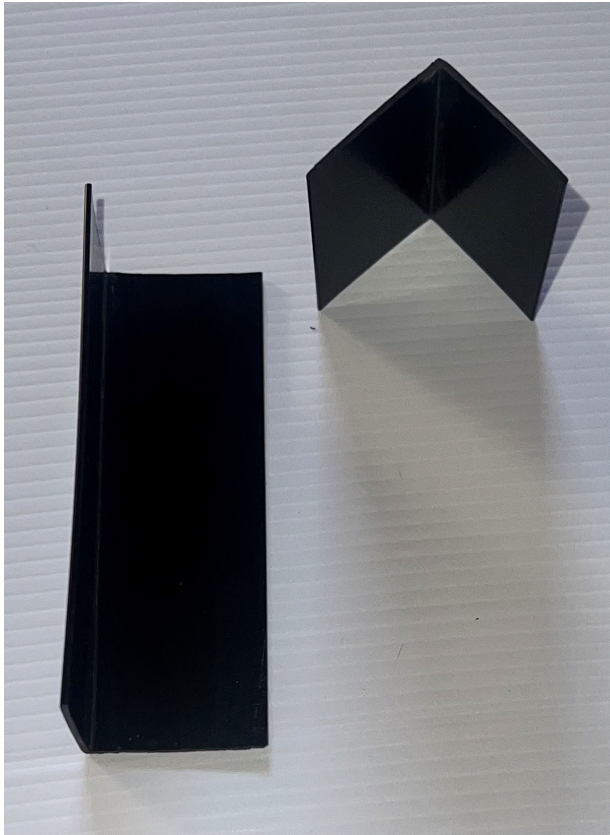
Item Code: ACN3030

Anodised aluminium coving 30 x 30 for  
clean look

No dirt traps

Easy to clean





# PVC Angle

Item Code: PVCA3232B

PVC Angle 32 x 32 mm Black in 4 m lengths  
For general use in cold-rooms installation



# Dial Thermometer

Item Code: TDR100



Dial Thermometers for cold and freezer rooms. This analogue thermometer has a rugged PVC construction designed for most applications with an easy-to-read from a distance.





# Thermostat

Item code: TSF2000

Refrigerator Thermostat -35 – +35 degree Celsius  
Model F2000 is a great universal thermostat

## Specifications

Rating voltage: 250V 50HZ/60HZ

Available temperature:-35~35 centigrade

Differential:2~10 centigrade

Used for refrigerators, freezers, air conditioners





# Condensers

Item Codes below

- C012F250** ½ HP. With one fan 250mm blade
- C034F250** ¾ HP With one fan 250mm blade
- C114F350** 1¼ HP With one fan 350mm blade
- C200F300** 2 HP With two fans 300mm blade
- C250F400** 2½ HP With one fan 400mm blade

With 230 Vac Fan motor





# Vertical Liquid Receivers

Item Codes below

**VLR01** - One Litre

**VLR02** - Two Litre

**VLR03** - Three Litre

**VLR04** - Four Litre

Working Pressure 450 PSIG







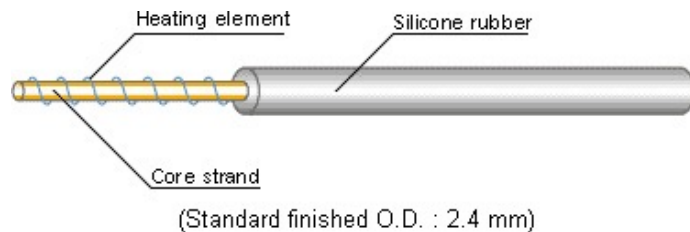
# Door Heating cable

Item Code: PDH15W57

Panel Door Heater 15w/m 5.7m long

For use around standard door openings, high quality heater wire around fiber strands covered with 2.5 mm silicone.

Other lengths and wattages available on request.





# Electrical Switch

Item Code: RSER20



This miniature round on/off toggle switch is rated up to 6A at 250 VAC and can be panel mounted in a 20mm diameter hole, supplied with a soft PVC dust/moisture cover. It'll also look good in your product.



# Splicing connectors

Item codes below



**SCL2** - For 2 Wires

**SCL3** - For 3 Wires

**SCL4** - For 4 Wires

**SCL5** - For 5 Wires



# Neutral Cure Silicone in Black or White

Item Code: SNC22W

Item Code: SNC22B



New Product



OLIVÉ C-22 is a high-quality, one-component, neutral silicone that in contact with atmospheric moisture becomes an extremely strong elastic joint.

It retains both its adhesion and elasticity in the joints, without ageing

Low modulus and high elasticity.

High movement capability.

High yield

Excellent adhesion to a wide range of substrates without priming.

UV radiation, weather and ageing resistant.

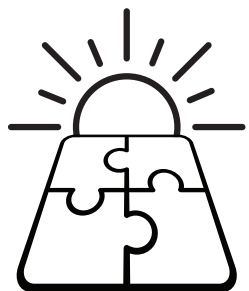
Extremely long service life.

Low odour.

Non-corrosive.



Supplied in packs of 24 only



Sun Energy Catcher

# SEC

## Sun Energy Catcher Solar Panels



Item Code: SECMF550W

Item Code: SECBF550W

We stock two types of monocrystalline solar panels

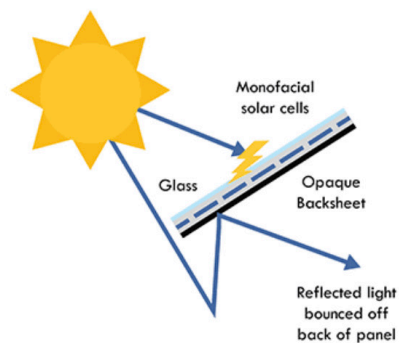
SCSPS – Mono-facial panel with a white backing.

15 Year guarantee material defects

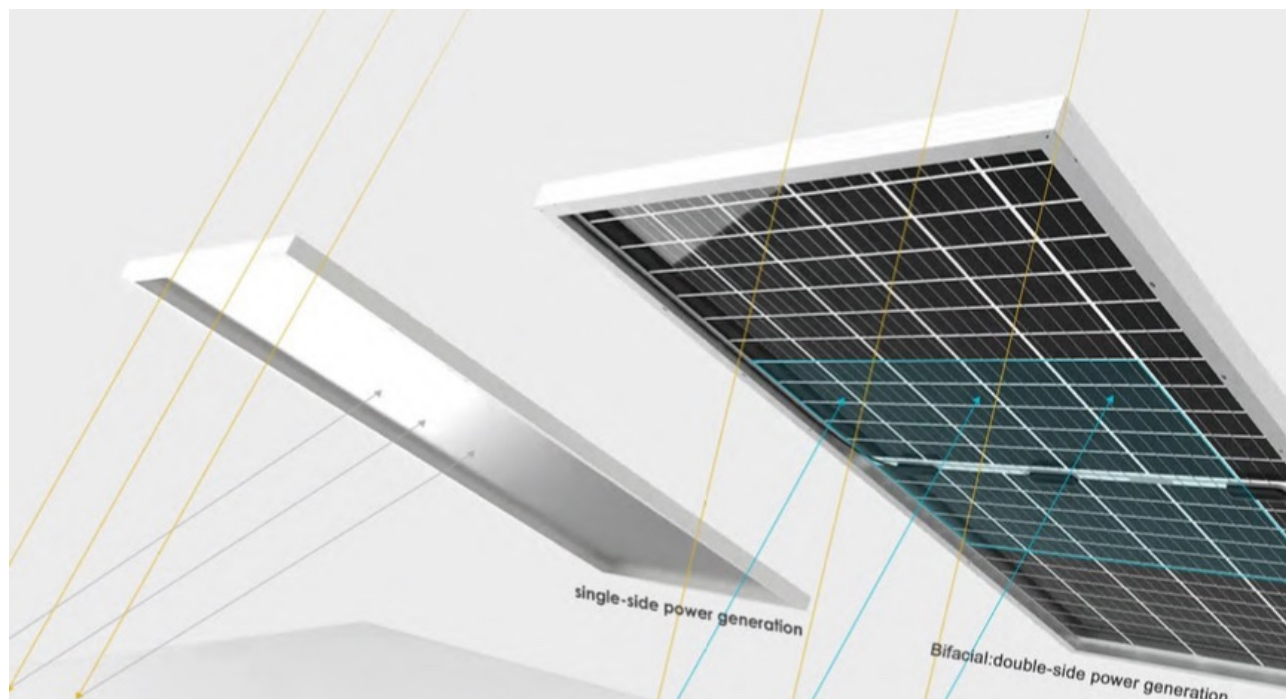
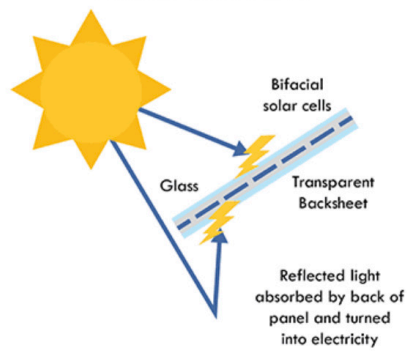
SCSBS - Bi-facial solar panels offer many advantages over traditional solar panels.

Power is produced from both sides of a bifacial panel, increasing total energy generation.

**Monofacial Solar Panel**



**Bifacial Solar Panel**







## Graphic Design and printing services



Our inhouse Graphic Design includes the entire process of defining requirements, visualizing and creating graphics including illustrations, logos, layouts and photos. We will shape the visual aspects of your ideas for websites, books, magazines, product packaging, exhibitions and many more.

- Meet with clients or the art director to determine the scope of a project.
- Use digital illustration, photo editing software, and layout software to create designs.
- Create visual elements such as logos, original images, and illustrations to help deliver a message.

**Quali Parts strive to add value to your business!**